



Ram Handbook

2009 – 2010

**51 YEARS OF EXCELLENCE
EDUCATING YOUTH**

Woodrow Wilson High School
1202 North Orchard Street
Tacoma, Washington 98406
253.571.6000
Fax 253.571.6162



Wilson High School Mission Statement

Develop Competent Contributing Citizens

Woodrow Wilson High School Code of Conduct

We seek to create an environment that fosters quality learning, helps students develop a sense of respect, and promotes accountability for actions.

We are opposed to all forms of discrimination, including slurs, jokes, labeling, and aggressions.

We believe everyone has the right to be treated in a fair manner with dignity and respect.

We believe our school must be free of violence, intimidation, discrimination, and harassment.

We support freedom of expression without infringing upon the rights of others.

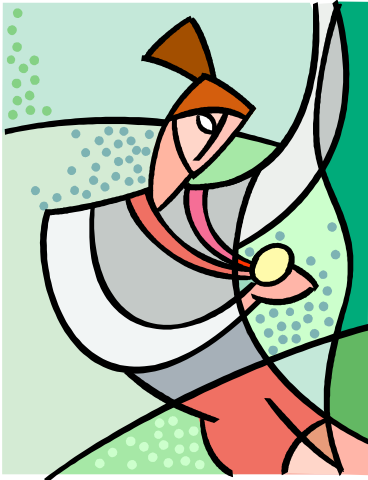
We believe that enforcing the Wilson discipline policy in an impartial manner is necessary to maintain a successful learning environment.

We will support and cultivate a positive learning environment.

Students – Did You Know?

Each year students leave their mark behind to inspire other students to reach higher than they have before. Below you will find many of the ways you may do that and be recognized for your accomplishments.

- A **3.2 GPA** or higher gets you a red and white **Honor Cord** to wear at graduation
- A **3.8 to a 4.0 GPA** gets you a **Gold Honor Cord** to wear at graduation
- A **GPA of 4.0** allows you the privilege of being a **Wilson High School Valedictorian**
- **3.2 to 3.79 GPA** gives you the title of **Wilson High School Commended Scholar**
- Earn a **3.8 GPA** and you are a **Superintendent's Scholar** and your name is put on a perpetual plaque hanging on the wall by the Career Center.
- Outstanding male and female student awards
- Male and female Athletes of the Year Awards
- You can aspire to be a National Merit Scholar and/or a Washington State Scholar!
- Hundreds of scholarship dollars available to you through the Career Center.



Principal's Greeting

Dear Students,

The high school years have the potential of being some of the best years of your life. Wilson High School is a wonderful place to live, work, and learn. We have a staff that is committed to helping you learn at the highest level to become the best you can be. Our student body has life, spirit, and pride. Our parents and booster club will do almost anything to make our school even better and our community has blessed us with unparalleled support and resources. These attributes make Wilson one of the best high schools anywhere! You are indeed fortunate to be a part of the history, the honor, the tradition, and the excellence that is Wilson High School.

This handbook is provided to you to assist your organization and learning for the school year. My hope is that each student understands and realizes each day that Wilson is a very special place to be at a very special time in their lives. Too often, people look back on high school and find out that they had some unbelievable opportunities to learn and prepare for life that went untapped. As a student, take full advantage of every opportunity that Wilson provides in academics, student activities and athletics. At Wilson, each individual student is important, matters, and belongs. Each student has a special place and a personal connection here. However, you are responsible to find where that "fit" is for you. It may take a while, but keep looking until your personal and positive place within our student body is found. Take pride *right now* in your school. Take responsibility *right now* for your learning. Make each day of school a part of your preparation for life, *right now*. Remember to respect yourself, respect others and respect your school. "*Our school IS GREAT!*" Do your part, everyday, to keep it that way.

Sincerely,
Dan Besett
Dan Besett, Principal

FIGHT SONG

Onward for colors true
Hail to red, white, and blue.
Hail, hail O Wilson High
The leaders and the best
Proudly we fight for fame
To win this and every game
Hail, Hail to Wilson High
The champions of the West
R – A – M – S yes

School Mascot: The Ram

School Colors: Red, White & Blue

DAILY BELL SCHEDULE

6 PERIOD DAY

WARNING BELL	7:25
1ST PERIOD	7:35 – 8:30
2ND PERIOD	8:35 – 9:30
3RD PERIOD	9:35 – 10:30
1ST LUNCH	10:35 – 11:05
4TH PERIOD	11:10 - 12:05
4TH PERIOD	10:35 – 11:30
2ND LUNCH	11:35 – 12:05
5TH PERIOD	12:10 – 1:05
6TH PERIOD	1:10 – 2:05
HALL/CAMPUS CLEARED	2:30

RIGHTS AND RESPONSIBILITIES



RIGHTS OF STUDENTS

- To attend school unless removed under due process as specified in the Education Code.
- To attend school in a secure academic and social climate, free of fear and violence.
- To enjoy the full benefit of their teachers' efforts, undiluted by the disruptive student.
- To have ready access to a designated counselor.
- To be fully informed of school rules and regulations.

RESPONSIBILITIES OF STUDENTS

- To attend school and classes regularly and on time.
- Participate in Ram Team.
- To be prepared for class with the appropriate materials and work.
- To know and obey school rules and regulations.
- To respect the rights of school personnel, fellow students, and the public in general.
- To demonstrate pride in the appearance of Wilson High School buildings and grounds.

RIGHTS OF PARENTS

- To expect that their children will spend their time at school in a safe, wholesome, stimulating atmosphere engaged in productive activity under the care and direction of a dedicated staff.
- To have assurance that school personnel will at no time preempt parental prerogative.
- To be informed of District policies and regulations and school rules.
- To review their child's record with a staff member providing assistance.

RESPONSIBILITIES OF PARENTS

- To visit school periodically to participate in conferences with teachers, counselors, or administrators regarding the academic and behavioral status of their children.
- To provide supportive action by making sure that your child has enough sleep, adequate nutrition, and appropriate clothing before coming to school.
- To maintain consistent and adequate control over their children and to approve of reasonable control measures as applied by school personnel.
- To cooperate with the school in bringing about improvements designed to enhance the educational program offered students.
- To provide the school with current information regarding legal address, phone number(s), medical data, and other facts which may help the school to serve their children.
- To become familiar with District policies and school rules and regulations.

RIGHTS OF TEACHERS

- To expect and receive the attention, effort, and participation of the students attending their classes.
- To have parental and administrative backing when enforcing rules designed to provide an optimum learning climate.
- To teach with interruptions held to an absolute minimum.
- To enjoy the same level of respect and courteous treatment accorded members of the class individually and collectively.

RESPONSIBILITIES OF TEACHERS

- To consider the personal worth of each individual student as a single, unique, important human being.
- To attempt to equip each learner with the knowledge, skills, attitudes, and values required for successful living.
- To assess divergent ideas, opinions, and expressions objectively and deal with them in a balanced, non-biased manner.
- To keep parents and students informed with timely and periodic reports, including all pertinent data related to the student's school experience.
- To consistently critique their own performance with the objective of an ever growing professional stature
- To initiate and enforce individual classroom rules consistent with school and District policies.

RESPONSIBILITIES OF ADMINISTRATORS

- To provide leadership that will establish, encourage, and promote quality teaching and effective learning.
- To promote student achievement as the primary goal of Wilson High School.
- To establish, publicize, and enforce school and District policies and rules that facilitate effective learning and promote attitudes and habits of good citizenship among the students.
- To request assistance from the District's support services and community agencies and resources in all cases indicating such action.
- To make a determined effort to stay attuned to expressions of students/staff/parent/community concerns and to react with sensitivity toward them.

Tacoma School District Website Information

District Web Site Address: <http://www.tacoma.k12.wa.us/>

Classroom web sites and On-Line Grades: accessed through Schools & Curriculum under Wilson **Webucator:** the Tacoma School District's newsletter, is updated weekly on line and can be located in the Calendar and News section of the Web Site.

Administration and Support Staff

Principal	Dan Besett		dbesett@tacoma.k12.wa.us	571-6010
Assistant Principals	Cherry Goudeau	10 th , 11 th & 12 th Grade	cgoudea@tacoma.k12.wa.us	571-6076
	Christine Brandt	9 th Grade	cbrand1@tacoma.k12.wa.us	571-6158
Counselors	Rich Coleman	9-11 th A-E & 12 th A-F	rcoleman@tacoma.k12.wa.us	571-6151
	Geri Gibson	9-11 th F-K & 12 th G-M	ggibson@tacoma.k12.wa.us	571-6060
	Kari-Ellen Elsdon	9-11 th L-P	kelsdon@tacoma.k12.wa.us	571-6119
	Matthew Burns	9-11 th Q-Z & 12 th N-Z	mburns@tacoma.k12.wa.us	571-6005
Drug/Alcohol Counselor	Thompson, Milagros	Office 138	Mthomp1@tacoma.k12.wa.us	571-6011
Career Counselor	Raniero, Joe	Career Center #142	iranier@tacoma.k12.wa.us	571-6019
College Prep Advisor	TBA	Career Center #142A		571-6021
Nurse	Dolores Apostle		dapostl@tacoma.k12.wa.us	571-6112
Psychologist	Jan Rutledge	Office #141	jretled@tacoma.k12.wa.us	571-6032
Speech Therapist	Gwen Caggiano	Office #132	gcaggia@tacoma.k12.wa.us	571-6013
Indian Ed	Martha Sherman	Office #120	msherma@tacoma.k12.wa.us	571-6013
ASB Advisor	Sam Hollingsworth		shollin@tacoma.k12.wa.us	571-6036
Athletic Director	John Portenier		jporten@tacoma.k12.wa.us	571-6069
Librarian	Hallie Johnston		hjohnst@tacoma.k12.wa.us	571-6054
Security	Eddie Edmond		eedmon@tacoma.k12.wa.us	571-6028
	Stephan Turner		sturner@tacoma.k12.wa.us	571-6039
	Jennice Foy		jfoy@tacoma.k12.wa.us	571-6028
Police Officer	Zack Smalls	Office #125	zsmalls@tacoma.k12.wa.us	571-6011
Chief Custodian	David Burnson		dburnso@tacoma.k12.wa.us	571-6115
Head Cook	Sue Peterson		speters@tacoma.k12.wa.us	571-6169
Secretaries	Tracey Meyer	Office Coordinator	tmeyer@tacoma.k12.wa.us	571-6070
	Marge Cunningham	Main Office	mcunnin@tacoma.k12.wa.us	571-6113
	Robin Brooks-Johnson	Para Professional	rjohnso@tacoma.k12.wa.us	571-6023
	Marge Beardemphl	Attendance 9 th -11 th	mbearde@tacoma.k12.wa.us	571-6114
	Jeannette Chantler	Attendance 12 th	jchantl@tacoma.k12.wa.us	571-6100
	Bridget Pong	Guidance/Transcripts	bpong@tacoma.k12.wa.us	571-6160
	Sandy Brooks	Scheduling	sbrooks@tacoma.k12.wa.us	571-6020

Telephone/E-mail List of Teachers

Name	Phone #	E-mail	Rm#	Subject
Aboubakr, Karim	571-6124	kabouba@tacoma.k12.wa.us	409	LAP/WASL Math
Arneklev, Dorraine	571-6047	darnsk1@tacoma.k12.wa.us	407	Math
Ausboe, Cheryl	571-6068	causboe@tacoma.k12.wa.us	102	Health
Baurichter, Paul	571-6120	pbauric@tacoma.k12.wa.us	Gym	PE
Birge, Michelle	571-6124	mbirge@tacoma.k12.wa.us	204	LRC-Special Education
Blazey, Pilar	571-6040	pblazey@tacoma.k12.wa.us	210	Spanish
Bowman, Mark	571-6096	mbowman@tacoma.k12.wa.us	226	Business Education
Brazel, Christine	571-6046	cbrazel@tacoma.k12.wa.us	406	Math
Chase, Cathy	571-6155	cchase3@tacoma.k12.wa.us	807	Glassblowing
Clegg, Don	571-6049	dclegg@tacoma.k12.wa.us	203	Social Studies
Davidson, Patricia	571-6168	pdavids@tacoma.k12.wa.us	807	Glassblowing
Davies, Steve	571-6187	sdavies@tacoma.k12.wa.us	206	Social Studies
Dommer, Kathleen	571-6043	kdommer@tacoma.k12.wa.us	202	Special Education
Erickson, Charlene	571-6189	cericks@tacoma.k12.wa.us	602	Autism-Special Education
Fergin, Tom	571-6077	tfergin@tacoma.k12.wa.us	106	Science
Ferguson, Mark	571-6034	mfergus@tacoma.k12.wa.us	224	Business Education
Fountain, Rebecca	571-6038	rfounta@tacoma.k12.wa.us	222	Business Math/English

Friel, Jenni	571-6061	jfriel@tacoma.k12.wa.us	109	Science
Galt, Michael	571-6090	mgalt@tacoma.k12.wa.us	909	JROTC
Gramento, Linda	571-6003	lgramen@tacoma.k12.wa.us	Gym	Physical Education
Gunns, Danielle	571-6163	dgunns@tacoma.k12.wa.us	603	Plant Biology
Hanson, Aaron	571-6074	ahanson@tacoma.k12.wa.us	107	Science
Harkness, David	571-6099	dharkne@tacoma.k12.wa.us	229	Special Education
Hartman, Rindi	571-6065	rhartm1@tacoma.k12.wa.us	605	Family Science
Herb, Mike	571-6101	mherb@tacoma.k12.wa.us	1001	Band/Orchestra
Hollingsworth, Sam	571-6036	shollin@tacoma.k12.wa.us	228	Business Education
Jankanish, Mike	571-6051	mjankan@tacoma.k12.wa.us	205	Social Studies
Johnson, Liu	571-6055	ljohns@tacoma.k12.wa.us	207	Social Studies
Judson, Rob	571-6035	rjudson@tacoma.k12.wa.us	402	Math
Kinsey, Margaret	571-6184	mkinsey@tacoma.k12.wa.us	211	Special Education
Larkin, Carin	571-6042	clarkin@tacoma.k12.wa.us	303	English
Leach, Gregg	571-6183	gleach@tacoma.k12.wa.us	410	Math
Lund, Tony	571-6073	tlund@tacoma.k12.wa.us	103	Science
Martinez, Kathy	571-6110	kmarti2@tacoma.k12.wa.us	801	Art
Mueller, Susi	571-6048	smuelle@tacoma.k12.wa.us	223	German/English
Nguyen, Quoc	571-6037	qnguyen@tacoma.k12.wa.us	308	English
Nino, Anthony	571-6056	anino@tacoma.k12.wa.us	208	Social Studies
Orlando, Kristen	571-6059	korland@tacoma.k12.wa.us	309	English
Oviatte, Marilyn	571-6088	moviatt@tacoma.k12.wa.us	808	Woodshop
Pham, Cuong	571-6186	cpham@tacoma.k12.wa.us	305	ESL
Purdin-Golding, Sarah	571-6095	spurdin@tacoma.k12.wa.us	101	Health
Raymond, Jacque	571-6087	jraymon@tacoma.k12.wa.us	302	Special Education
Reddin, Daniel	571-6082	dreddin@tacoma.k12.wa.us	804	Technical
Rehberg, Virginia	571-6071	vrehber@tacoma.k12.wa.us	105	Science
Reisberg, Donna	571-6176	dreisbe@tacoma.k12.wa.us	608	Adjustment/LRC
TBA	571-6033		231	American Sign Lang.
Richardson, Ken	571-6072	kricha1@tacoma.k12.wa.us	108	Science
Ring, Sam	571-6144	sring@tacoma.k12.wa.us	Gym	Physical Education
Robinson, Betsy	571-6018	brobins@tacoma.k12.wa.us	220	Diversified Oc
Rogers, Cameron	571-6097	crogers@tacoma.k12.wa.us	311	Read 180
Salvador, Salomon	571-6045	ssalvad@tacoma.k12.wa.us	221	Spanish
Shelton, Courtney	571-6101	cshelt@tacoma.k12.wa.us	1001	Orchestra
Shepherd, Wendy	571-6156	wshephe@tacoma.k12.wa.us	1002	Vocal Music
Shockley, Stephanie	571-6066	sshock1@tacoma.k12.wa.us	606	FCS
Singleton, Carrie	571-6018	single@tacoma.k12.wa.us	405	LAP Math
Simmons, Joshua	571-6108	jsimmon@tacoma.k12.wa.us	803	Art
Solmiren, Yvonne	571-6110	ysolmir@tacoma.k12.wa.us	404	Math
Springer, Tom	571-6188	tspring@tacoma.k12.wa.us	312	English
Stanley, Bettina	571-6106	bstanle@tacoma.k12.wa.us	209	French
Svinth, Kevin	571-6074	ksvinth@tacoma.k12.wa.us	201	Social Studies
Tabares, Isis	571-6041	itabare@tacoma.k12.wa.us	225	Spanish
Turnbull, Kirk	571-6185	kturnbu@tacoma.k12.wa.us	408	Math
Twitchell, David	571-6057	dtwitch@tacoma.k12.wa.us	310	English
VanRy, Kimberly	571-6063	kvanry@tacoma.k12.wa.us	306	English
Waters, Sara	571-6050	swaters@tacoma.k12.wa.us	304	English
Wheat, Sharon	571-6043	swheat@tacoma.k12.wa.us	403	Adjustment-Special Education

COUNSELING CENTER

Wilson High School has four counselors who look forward to getting to know you personally. Students are assigned a counselor based on the first letter of their last name.

Last Name Begins With:

A-E 9 th -11 th & A-F 12 th	Rich Coleman	571-6151
F-K 9 th -11 th & G-M 12 th	Geri Gibson	571-6060
L-Q 9 th -11 th	Kari Ellen Elsdon	571-6119
R-Z 9 th -11 th & N-Z 12 th	Matthew Burns	571-6005
Career Counselor:	Joe Raniero	571-6019
College Prep Advisor	TBA	571-6021
Guidance Secretary:	Bridget Pong	571-6160
Drug/Alcohol:	Milagros Thompson	571-6067

The counseling staff provides the following services to all students:

- Enrollment and orientation for students who are new to Wilson.
- Assistance to students in the development of their educational plans, class selection, and graduation requirements.
- Support in dealing with personal issues, concerning self-esteem, relationships, communication problems, abusive situations, and chemical dependency.
- Information and assistance regarding career choices.
- Information and assistance to students and families in need of services from community agencies.
- Timely credit reviews.
- Assistance in exploring available educational options when having difficulty in the regular school program.

We also encourage parents to phone or e-mail to confer with the counselors regarding any concerns they may have. **Please be sure to call for an appointment to see a counselor.**

STUDENT GOVERNMENT

Wilson High School's student council is made up of students who are elected to represent the student body to ensure student input in the planning of student activities and the distribution of student body funds that are raised through activity card sales and other fund raisers. All expenditures of ASB student funds require the approval of the student council. The student council officers and representatives must take a leadership class for a grade and credit.

To serve on the student council a student must:

- Follow all attendance and behavior rules of the Athletic & Activity Contract.
- Be a full-time student at Wilson, taking at least 4 classes
- Class officers must maintain a 2.5 GPA
- ASW officers must maintain a 3.0 GPA
- Have an ASB Card

Associated Students of Wilson (ASW)

ASW OFFICERS

President:	Garrett Johnston
Vice President:	Justin Macejunas
Treasurer:	Chelsea Kem
Secretary:	Brianna Sherwood

SENIOR CLASS OFFICERS

President:	Desiree Collins
Vice President:	My'Lissa Young

JUNIOR CLASS OFFICERS

President:	Dan Henehan
Vice President:	Athena Apostle

SOPHOMORE CLASS OFFICERS

President:	Riley Jorlin
Vice President:	Alexa Olague

ASSOCIATED STUDENT BODY CARD

The Wilson ASB card is the main source of income for the Associated Student Body. Students who purchase ASB cards receive reduced admission to events, games, and dances, parking stickers, and "Wilson" gear. Since revenue for athletic uniforms and student activities are derived from the sale of ASB cards, every member of any school sponsored team or organization is required to purchase an activity card. No refunds for any reason.

Your ASB card will get you into all Tacoma Public high school games FREE!! Discounts are given for tickets to every WHS casual, semi-formal, and formal dances. ALL students who participate in any clubs, athletics, cheerleading, drama, choir, band, orchestra, etc. must purchase an ASB card. ASB and fundraisers provide revenue to these clubs and sports.

CLUBS AND ACTIVITIES OFFERED AT WILSON

A.A.H.S. Pageant	Knowledge Bowl
Computer Club	PEP Club
Daffodil Pageant	Running Club
Dance Club	Salsa Club
Drama	Journalism Club
Environmental Club	Step Team
FCCLA	Waterpolo - Boys
Gay/Straight Alliance	Varja
Honor Society	
Key Club	

Additional Information Sites: Wilson High School Web Site www.wilsonrams.org
District Web Site www.tacomaschools.org

ATHLETICS

Athletic participation is completely voluntary and a privilege. Involvement in the athletic program does require you to give a lot of yourself. You must be willing to make a commitment of your time and energy beyond the normal school day. Turning out for a sports team requires duties on your part. You must maintain a 2.0 G.P.A. in order to participate in competition and attend all classes regularly. It is expected that your conduct will be appropriate at all times. To assume lesser standards would be an injustice to you and a disservice to Wilson High School.

Student athletes must purchase an ASB card and have on file with the Athletic Director a current medical physical, parent permission and contract form. Student athletes must have medical insurance and also submit an Emergency Medical Information form. These forms are available in the main office, from the athletic director located up in the gym or on the School District web site www.tacomascschools.org.

The number of teams each program has depends on the number of participants. Some of the programs will have a selection process. Coaches have the responsibilities to evaluate and select students for participation. Only the coach is authorized to make selections for team membership and playing time.

SPORTS AVAILABLE AT WILSON & COACHES

Fall

Sport

Cross Country (Boys & Girls)
Football
Soccer – (Girls)
Swimming – (Girls)
Tennis – (Boys)
Volleyball
Cheer Squad

Head Coach

Sam Ring/Keith Wren
Don Clegg
Carin Larkin
Don Higgins
Quoc Nguyen
Erin Olsen
Debbie Parnell

Winter

Sport

Basketball (Boys & Girls)
Swimming – (Boys)
Wrestling
Bowling – (Girls)

Head Coach

Dave Alwert/Michelle Birge
Don Higgins
Quoc Nguyen
Ken Richardson

Spring Sports

Sport

Baseball – (Boys)
Golf (Boys & Girls)
Soccer – (Boys)
Fast pitch
Tennis – (Girls)
Track (Boys & Girls)
Waterpolo – (Girls)

Head Coach

Mark Bowman
Mike Fabiani
Jason Gjertsen
Ron Balmer
Quoc Nguyen
Sam Ring/Keith Wren
Josh Newman

CODE OF CONDUCT

ASSEMBLIES

Wilson students have the **PRIVILEGE** of attending assemblies, concerts, dances, field trips, sports and other out of class activities. In order for students to continue to have these **PRIVILEGES**, they are required to adhere to the following:

1. No rude, disruptive, insubordinate, obnoxious, or disrespectful behavior.
2. When the lights go down, or the speaker steps to the microphone, or the conductor/director steps on stage, the audience should immediately become quiet and attentive.
3. No talking, noises, gum cracking, side conversations, etc. It is appropriate to carry on a side conversation with someone near you during the applause, but you should immediately become quiet and attentive after the applause is over.
4. During the performance, there should be no moving around the venue. If there is a need to move, wait until the selection has ended and move during an appropriate applause time.
5. Applause for performance and appreciation should be appropriate. There should be no obnoxious clapping, or continued clapping when the majority of the audience is finished.
6. No yelling out performers' names or comments of any kind.
7. No behaviors that take any attention off of the planned program, the performers on stage or the right of the audience to focus their enjoyment and attention on the activity.
8. If a student member in the audience brings undue attention on him or herself, he/she will be removed from the assembly. Depending on the reason for removal from an assembly, a student may be subject to missing future out of class activities, including dances, concerts, plays, field trips, sporting events etc.

Wilson High School has a positive reputation. We take great pride in our assemblies, concerts and other performances. Let's keep it that way!

DANCE CODE OF CONDUCT AND RULES

1. Wilson casual dances are for **Wilson students only**. Students must show Wilson I.D. at the door to be admitted.
2. Guests may be admitted to formal dances provided the guests comply with the Tacoma School District rules including smoking and alcohol/drug use. The guest must be signed up **two weeks** before the dance and must be approved by the administration. Only guests who are full time students in other high schools, of appropriate age, and in good standing with their schools (not on suspension) will be approved as guests for formal dances.
3. No water bottles or beverages may be brought into the dance. The Tacoma School District rules regarding alcohol beverages will be enforced and administrators will call parents when appropriate.
4. Students may not leave the dance and return. Once a student goes outside, he/she will not be readmitted or sold another ticket.
5. No loitering or waiting for friends outside the dance area or parking lots. Police officers will ask people to leave.
6. No inappropriate dancing is allowed. (SEE DANCE CODE OF CONDUCT/RULES PAGE 14) Students must dance in an upright position. NO FREAKIN!! Students whose dancing behavior endangers others (moshing) will be asked to leave by the adult chaperones. No refunds will be given. Students may be denied admission to future dances.
7. Clothing with offensive messages or clothing with alcoholic beverages or drug use symbols or messages may not be worn at school dances or activities. Offenders will be sent home without refund.
8. Dance photos must be ordered and paid for at the dance prior to the photo being taken. Any photo containing gang signs or obscene hand gestures, et al, will not be delivered and no refunds will be given.

DANCE CODE OF CONDUCT AND RULES (continued)

9. All dances begin at **8:00 P.M.** Students will be on their way home at **11:00 P.M.** Please arrange for transportation home **prior** to the end of the dance.
10. Secure your valuables. The school cannot be responsible for purses etc. left unattended.
11. For safety reasons, **no infants or small children** may come to school dances with students.
12. Students removed from a dance will not be able to attend the next dance.

ACCEPTABLE DANCE BEHAVIORS

- **WHEN DANCING FRONT TO FRONT MAKE SURE TO KEEP BOTH FEET IN CLOSE CONTACT WITH THE FLOOR AT ALL TIMES! NO PELVIS TO PELVIS CONTACT OR THRUSTING!**
- **WHEN DANCING BACK TO FRONT, MAKE SURE TO KEEP BOTH FEET ON THE FLOOR AT ALL TIMES! NO PELVIS TO BUTTOCKS CONTACT OR THRUSTING!**
- BEHAVE ON THE DANCE FLOOR AS IF YOUR GRANDMOTHER IS THERE WATCHING YOU!
- KEEP YOUR HEAD ABOVE YOUR WAIST.
- HAVE A GOOD TIME WITHOUT VULGAR CONNOTATIONS OR GROUPING.
- OBEY AUTHORITY FIGURES (ADMINISTRATIONS, SECURITY, PARENT CHAPERONES, OTHER ADULTS)

UNACCEPTABLE DANCE BEHAVIORS

- ALCOHOL, DRUGS, SMOKING
- GRABBING OF THE ANKLES
- LAP DANCES
- TRAINS THAT INVOLVE THRUSTING OF PELVIS
- DANCING ON THE SPEAKERS OR OTHER PROPS
- DANCING UP AGAINST THE WALLS
- PUTTING HANDS ON THE GROUND
- DANCING PRONE ON THE FLOOR
- OR ANY OTHER BEHAVIOR(S) FOUND UNACCEPTABLE BY THE ADMINISTRATION, SECURITY OR CHAPERONES.

IMPORTANT TICKET NOTE: THERE WILL BE NO DANCE TICKET REFUNDS



GENERAL INFORMATION

ASSISTANTS (STUDENT ASSISTANTS)

Junior/Senior students are allowed to be student assistants. Only one assistant per class per semester is allowed. All exceptions must have administrative approval.

ATHLETIC/PHYSICAL EDUCATION EQUIPMENT

Athletic/physical education equipment is provided in the physical education classes. Students ARE NOT ALLOWED to bring personal items of this nature to school. Basketballs, baseballs, footballs, etc will be confiscated by staff and returned to the student at the end of the school day. Continued violations will result in progressive discipline.

BUS TRANSPORTATION

Bus passes will be issued to all students who are eligible. It is necessary that students submit a signed bus application to Mrs. Brooks-Johnson in the main office. Misbehavior on the bus may result in detention, suspension from school, and/or loss of privilege of riding the bus. School ID cards are required to ride the school bus.

CAFETERIA/LUNCH

The cafeteria at Wilson is designed for student comfort and use. We have considerable pride in the services of the cafeteria as well as the attitude of Wilson students in keeping the tables and the floor clean. Students should clean up the table when they are finished eating and throw away their garbage in the garbage cans. **All food items purchased in the cafeteria must be consumed in the cafeteria. WILSON HIGH SCHOOL HAS A CLOSED CAMPUS POLICY. STUDENTS ARE NOT ALLOWED TO LEAVE THE CAMPUS DURING LUNCH OR ANY OTHER TIME DURING THE SCHOOL DAY WITHOUT PRIOR PERMISSION AND THE APPROPRIATE DOCUMENTATION.**

CAREER CENTER

The Wilson High School Career Center is the hub of the school. It is a valuable resource that contains the latest information concerning post-high school training opportunities and occupations. The resources include catalogs from local and national schools, colleges, universities, and technical sites and apprenticeship programs, occupational handbooks, videos, and software to assist students in their planning.

The Career Center hosts scholarships, visits from colleges, universities, military academies, and technical schools, as well as representatives from a variety of occupations. Students are encouraged to attend a variety of presentations to help them make informed choices for beyond high school.

CLASS SCHEDULE & CHANGES TO SCHEDULE

Students register for course selections in May for the full year (both semesters). These requests are then entered into a student data base program that will assign periods and teachers. **The administration and/or school counselors must approve any subsequent requests for class changes.** Students are expected to follow the assigned schedule, and administrator and/or counselor must approve all schedule changes.

CLOSED CAMPUS & ADJACENT PROPERTIES

All Tacoma Schools observe a closed campus policy. *Once you have boarded a school bus, you are considered at school.* Students are to stay on the school grounds, in the designated areas, from the time they arrive until dismissed. Students must bring a written parental request to the attendance office in order to leave campus for any reason. Passes will be limited and must have administrative approval. Students will be subject to disciplinary action for leaving campus without permission.

To maintain an “optimum learning atmosphere” and for the safety and security of our students, staff, and the community, students are not allowed to gather in groups on sidewalks/easements, including bus stops around residences near Wilson High School before, during, or after school. THIS MEANS ALL HOMES IN THE AREA. Additionally, students are not allowed to possess tobacco and/or smoke on school grounds. This rule also applies within sight of the school grounds, near neighborhood homes and bus stops.

DIGITAL RESOURCES

(Computers, internet access, data base, etc.)

Policy No. 6973 states that sending, receiving, and storing digital data using Tacoma School District resources (computers, telecommunications and /or networking equipment) represent powerful educational resources and potential for greater efficiency in delivering district services. The district encourages information dissemination, collaboration, innovation and experimentation through the ethical use of technology, and requires its staff and students to adhere to federal and state laws and district policies. Do not use digital resources for illegal, harassing, antisocial, or indecent purposes; do not access or process obscene, pornographic or other inappropriate materials. Any use of digital resources that violates school district policy will constitute disciplinary action.

EXTRACURRICULAR ACTIVITIES

Students must be passing in at least four full-time subjects the previous and current semester and maintain a 2.0 G.P.A. in order to participate in athletics and school activities. Students who are absent one or more periods on the day of an extracurricular activity in which they are scheduled to take part will not be allowed to participate. This policy affects all extracurricular activities, i.e., athletics, student council, cheerleading, music, and drama.

FEES (All fees are subject to change)

A.S.B. Card (required of all athletes & student activities/clubs)	\$30.00
Nova	\$70.00 Until 9/30/09 - \$75 After 9/30/09
Parking Permit	\$35.00 (\$30.00 w/ASB)

Instrument use fee: A yearly non-refundable fee will be assessed for students who use school instruments. This fee will cover basic maintenance of instruments such as annual chemical bath for wind instruments or replacing strings on orchestra instruments. Additional charges will be assessed to students if the instrument is returned in a damaged condition. See your band or orchestra teacher for procedures to apply to use a school instrument. You may pay your fee to Office Coordinator, Tracey Meyer.

Narrows League Athletic Admission Prices:

2009-2010 Athletic Adult Pass*	\$ 50.00
2009-2010 Athletic Family Pass *	\$100.00
Adults & High School Students without ASB	\$ 5.00
Senior Citizens	\$ 3.00
Visiting Students with ASB card	\$ 3.00
Middle School Students with ASB	FREE
Tacoma High School Students with ASB at TPS HS only	FREE

Other fees (shop, art, fines, etc.) should be paid to the Office Coordinator, Tracey Meyer.

***Funds for Athletic Passes, when purchased at the school, go directly to the school. You may have the funds applied to the sport/activity of your choice.**

FOOD SERVICE

Effective September 2009, cost for High School breakfast \$1.50, cost for reduced priced lunch .40 and full price \$2.75. Forms for Free or Reduced Lunch are in the main office and should be returned to Food Services Department at 3321 S. Union Ave. Phone number is 571-3370.

GRADES

The school year is divided into two semesters of 18 weeks each. Final grades, given at the end of each semester, are posted on the student's transcript and determine his/her grade point average (GPA). One mid-term grade report is issued at 12 weeks of the semester. In addition, parents/students may access grades online. Students must complete 18 weeks in a course with a minimum of D grade to earn .5 credit.

Credits needed to achieve class status:

9 th grade	0 – 4.5	11 th grade	11 – 16.5
10 th grade	5 – 10.5	12 th grade	17 and above

Students and parents can stay updated on academic progress and classroom attendance by accessing Wilson's online grades. Go to www.wilsonrams.com and click on the "Online Grades" link located on the right side of the Home Page.

HEALTH CENTER

The school nurse is available to all students for health status appraisal, i.e. vision, hearing, dental, and scoliosis screening, first aid and emergency care and as a school resource for health education and prevention programs. The nurse is available for counseling regarding any health concerns students may have.

It is IMPORTANT that students with special health problems such as diabetes, epilepsy, recent surgery or hospitalization report to the nurse at the beginning of the school term.

Tacoma School District Policy does not allow the nurse to give any medications of any kind, including aspirin or Tylenol. Arrangements for medication at school can be made with the school nurse with a written parental request and a physician's prescription.

HOMEWORK

Homework will be a regular part of each student's school experience. Homework is defined as relevant tasks (or assignments) to be done outside of, or in conjunction with regular class work. Students in grades 9 – 12 can expect on average to spend from 60 to 120 minutes daily on homework.

STUDENT IDENTIFICATION CARDS

Pictures for all students will be taken in September and an ID card will be issued. Students are strongly encouraged to keep their ID card secure. **Students are required to carry their ID card with them at all times while at school.** Replacement cards sold at a cost of \$5.00 each, not including ASB

INSURANCE

Insurance is available from an independent company each fall to all students at very reasonable rates. It is designed to cover medical and dental expenses incurred from accidents while under school supervision. We strongly urge all students of Wilson High School to take advantage of this opportunity.

LOCKERS

Lockers are assigned in Ram Teams. Malfunctions or thievery should be reported to the Security Officers. ***Highly valued items should not be brought to school, nor left in a student locker; and the locker door should always be locked after use.*** Students should never tell anyone their combination, not even close friends. Students are requested to keep their belongings in their own lockers. ***Wilson High School is not responsible for lost or stolen items.***

LOST AND FOUND/STOLEN

All lost items are taken to the Security Office or the main office. A brief description of the article and its contents may help regain a lost possession. **To insure prompt recover/investigation, lost or stolen articles should be reported immediately.** Students who find lost articles are expected to turn the article over to the security officer(s) or the main office. *Wilson High School is not responsible for lost or stolen items.* **Students are requested not to bring valuables to school.**

MAKE-UP WORK

If an absence is excused, the student shall be permitted to make up all missed assignments outside of class under reasonable conditions and time limits established by the appropriate teacher, **except in participation type classes.** A student's grade may be affected because of the student's inability to make-up the activities conducted during a class.

PARKING RULES & REGULATIONS

Each school year students who wish to drive to school must register their cars. Parking on campus is a privilege. In order to accommodate the large number of students and staff desiring to park on school property, in accordance with TSD regulation 6550, the rules listed below have been established. Non-compliance will result in disciplinary action, and or a fine. Please park in designated student parking areas.

1. All students must register his/her vehicle with our School Security Officer, Stephan Turner.
2. Students must possess a valid Washington State driver's license and show proof that there is liability and property damage insurance on the vehicle and acknowledge that he/she will assume full responsibility for any comprehensive or collision claims that may occur while on school property.
3. Students must provide copies of their drivers' license and insurance and fill out the Vehicle Registration card before a parking decal will be issued.
4. The cost is \$30 w/ASB and \$35 without an ASB. Students parking without a decal will be subject to a \$35.00 fine.
5. The parking lot is **OFF LIMITS DURING THE SCHOOL DAY (7:30 – 2:05).** This includes lunchtime. Books, lunches, clothing, etc. **should not** be left in the vehicle.
6. Speeding or careless driving in the parking lot and on the streets bordering the campus will result in loss of parking privileges and the incident will be reported to the police department.
7. The school/school district is not responsible for vandalism or theft of the vehicle. Students are encouraged to leave valuables at home, including large speakers and other items that might tempt a thief.
8. Possession of alcoholic beverages, drugs/illegal chemical substances or opiates, firearms, ammunition, or dangerous weapons fall under the terms and conditions of 'Student Conduct Rules' and extend to a student's vehicle parked on school district property and adjacent properties.
9. A student may transport another student during the day only with the consent of the student passenger's parent and if consistent with the terms of the student's drivers license.
10. Student vehicles shall not be parked on district property overnight unless the principal or designee has given authorization to the student because of a school-related activity. The district shall not be held liable for any damage that may occur to a vehicle left parked during non-school hours or overnight.
11. Parking decals are to be displayed in the left front window of the vehicle.
12. Students who choose to park on the side streets and adjacent properties to avoid paying for a campus parking permit are subject to City of Tacoma parking rules/regulations.

PLAGIARISM

It is the official policy at Wilson High School that students will not plagiarize their academic work. This is a violation under District policy and is considered '**exceptional misconduct**' which may result in suspension from school.

VISITORS

Students are not allowed to bring visitors to school or to have non-Wilson students/visitors come to the school looking for them. Students are not allowed to bring siblings, other relatives, or friends to school.

Wilson High School welcomes and encourages visits by parents, other adult residents of the community and interested educators.

The learning environment and the staff's time for students shall be free from interruption. Therefore, **we encourage parents/guardians to make an appointment to see a teacher(s), counselor, administration, and to visit a classroom, with at least a 24 hour notice.**

All visitors MUST register at the main office and get a visitors badge.

ATTENDANCE POLICY

Parents of any student eight years of age and under eighteen years of age shall cause such child to attend school unless the child is enrolled in an approved private school, an educational center as provided in chapter 28A.205 RCW or is receiving home-based instruction. Any law enforcement officer authorized to make arrests can take a truant student into custody without a warrant and must then deliver the student to the parent or to school. (Policy 3121)

- Parents and/or guardians are asked to notify the attendance office(s) when a child will be absent and give the reason for the absence on the morning of the absence. If a parent or guardian anticipate an extended absence, pre-approval is required by notifying the appropriate attendance office with a written notice three school days prior to the absence.
- If a student is absent, a note (or parent/guardian phone call) is required with reason, date, and signature of parent or guardian. Excuses are to be turned into the attendance office no later than 7:30 A.M. on the morning following each absence. Students must check into their attendance office before going to class.
- When a student is marked absent from one or more classes, parents will be notified by use of a computerized system called Connect Ed. This call will inform parents that their student has missed one or more classes for that day. This phone call keeps parents informed about their child and also complies with the BECCA Law.

Excused Absences:

- Personal illness, health condition, or medical or dental appointments; students absent five (5) days or more from school will need a note from a physician certifying the dates of illness.
- Family emergencies approved by the principal (examples include: fire; significant illness, death or funeral within the family)
- Appearances in court when required by law
- Long-term suspensions that do not result in a loss of grades or credits; short-term suspensions, and emergency expulsions
- Approved family activities, as detailed in section above of this regulation
- Religious observance shall not have the absence count against attendance requirements for school-based reward, incentive or behavior management programs
- School-approved activities.

Un-excused Absences

- Absences for reasons not listed above are un-excused.
- Students returning to school without providing a valid excuse from a parent within one school day will have the absence recorded as un-excused.
- Schools may (but are not obligated to) provide the opportunity for make-up work due to un-excused absences.
- Un-excused absences may adversely affect a student's grade.

Family Planned Absences

- A parent may request that a planned family activity be approved by contacting the grade-level principal in writing at least three (3) school days before the student's absence.
- If approved, the family activity shall be considered an excused absence, provided all conditions in this section are met.
- Approval is at the discretion of the principal. Approval or denial is on a student-by-student basis, and shall include a fair consideration of the impact of the planned absence on the student.
- The principal may require an agreement with the student, parent and teacher to complete special assignments and/or missed work.
- Failure to complete an agreed upon assignment will cause the absence to be considered un-excused.

COMPULSORY SCHOOL ATTENDANCE LAW

BECCA PROCESS:

The State Legislature updated the Compulsory School Attendance Law in the summer of 1995 and 1996, concerning students who are truant or have un-excused absences from school. The law requires all parents, guardians and Washington State residents having children between the ages of eight and eighteen to cause the child to attend a public or private school. Any person violating this requirement shall be fined not more than \$25.00 for each day of un-excused absence from school unless the court decides otherwise.

Parents are to be informed when the student has failed to attend school after one or two un-excused absences via Wilson's Connect Ed telephone message service and BECCA letter #1 mailed home.

- 3-5 Unexcused Absences - BECCA letter #1 mailed home. Conference scheduled with parent, student, and their counselor.
- 5-7 Unexcused absences in a 30 day period or ten unexcused absences in a year – BECCA Petition is filed with the courts. After a petition is filed with the courts, a court date is set and the student must appear and explain the unexcused absences. An order compelling school attendance is written by the courts. An unexcused absence that occurs, after the court order to attend is written and signed, allows the school to file a Progress Report with the courts.

15/10 RULE

No hall passes are given in the first 15 minutes of class instruction or the last 10 minutes of class time.

ATTENDANCE and TARDY PROCEDURES/CONSEQUENCES

ATTENDANCE POLICY

- | | |
|--------------------------------------|---|
| • 1 st unexcused absence* | ConnectEd calls home** |
| • 3 rd unexcused absence | Teacher contacts home & Becca letter #1 |
| • 5 th unexcused absence | Teacher referral to counselor; counselor, parent, student meeting; Becca letter #2 |
| • 7 th unexcused absence | Office referral; Becca Petition filed; Thursday/Friday School assigned. |
| • 9 th unexcused absence | Office referral, administrator, parent, student conference; reduced day/alternatives. |
| • 12 th unexcused absence | Office referral; administrative conference; alternative placement/options. |

* Excessive **excused or unexcused** absences may impact your performance.

TARDY POLICY

- 1 to 3 tardies Classroom teacher handles; contacts home.
- 4 to 6 tardies Referral to appropriate counselor by teacher; contact home.
- 7 or more tardies Office referral; administrative discretion

****Phone calls are made daily to your home when you are marked absent. Be responsible and make sure your classroom teachers are recording your attendance accurately, including tardies.**

WILSON'S DISCIPLINE POLICY

It is impossible for teaching or learning to take place in a classroom unless good order is maintained. Students are reminded that they must adhere to a code of good behavior, not only for their own benefit, but for the benefit of others as well. Students are responsible for their own actions and are held accountable for all rules and responsibilities within this handbook, as well as, Tacoma School District "STUDENTS RIGHTS, RESPONSIBILITIES, AND REGULATIONS" publication.

DISCIPLINE DEFINITIONS

FRIDAY SCHOOL – Assigned by Administration; to be served on a Friday after school for 1.5 hours. Students are to report to the staff member in charge by 2:30. Students are to bring school work for the entire 1.5 hours. Any violations of the Friday School will result in further progressive discipline. Failure to attend without having made prior arrangements will result in a two day suspension.

THURSDAY SCHOOL. - Assigned by Administration; Students are to report to the staff member in charge by 2:30. Students are to bring school work for the entire 1.5 hours. Any violations of the Thursday School will result in further progressive discipline. Failure to attend without having made prior arrangements will result in a two day suspension.

SUSPENSION – Denial of attendance for more than one (1) class period or denial of admission to or entry upon school district property for a stated period of time.

SHORT-TERM SUSPENSION – A suspension of no more than ten (10) consecutive school days.

LONG –TERM SUSPENSION – A suspension which exceeds a short-term suspension (more than 10 consecutive school days.)

EMERGENCY EXPULSION – A student may be immediately removed from school if the student's presence poses an immediate and continuing danger to the student, other students or school personnel, or is an immediate and continuing threat of substantial disruption of the educational process.
(WAC 180-40-295)

EXPULSION – Denial of attendance at the school and/or any district school in the state of Washington for up to one year. Students may be re-admitted after a formal hearing.

EXCEPTIONAL MISCONDUCT

The following are prohibited during school time, on school district property or transportation or premises provided by contractors or agents during school-sponsored activities, or if conducted in a manner materially or substantially affecting the educational process. The following are exceptional misconduct and can be cause for discipline, disciplinary transfer, suspension or expulsion, as well as reporting to law enforcement.

- Arson – Intentionally attempting to or setting a fire or causing an explosion.
- Assault/fighting – Creating a reasonable apprehension or making harmful or offensive contact with another.
- Bomb threat - Explosives or look alike devices – Unwarranted verbal or written indication of a bomb or other incendiary device on school property. Threats (verbal/written) or actions associated with bombs, explosives or look alike devices will be arrested by the Tacoma Police Department, and will be cause for discipline, disciplinary transfer, suspension, or expulsion.
- Burglary – Entering or remaining unlawfully in a building with intent to commit a crime.
- Disruptive conduct – Conduct or expression causing substantial or material disruption or obstruction of any school function or operation, including, but not limited to, refusing to comply with a staff person’s directive, using vulgar or profane language, or engaging in verbal or physical harassment.
- Extortion, blackmail, coercion – Attempting to obtain money, services or property by threat of injury to a person or property.
- False alarm – Activating a fire alarm for other than the intended purpose of the alarm.
- Fireworks/bullets – Possession, use or distribution of firecrackers, fireworks, bullets or other forms of explosive devices and/or other forms of ammunition and explosives.
- Harassment/Intimidation and Bullying – Intentionally intimidating, annoying or bothering another person.
- Interference with school authorities – Interfering with the discharge of the duties of district or contractors’ personnel or volunteers by force or violence.
- Intimidation/threat – Interfering with the discharge of the duties of district personnel or employees of district contractors or the peaceful conduct of other students by intimidation with threat of force or violence.
- Malicious mischief – Intentionally causing damage to any property.
- Misrepresentation – The forging of any signature or the making of any false entry or the alteration of any document, including computer records; cheating, plagiarizing or turning in another person’s work; notes for absences, changing grades on progress reports/others, etc.

FIGHTING WILL NOT BE TOLERATED AT WILSON

Students who choose to fight or assault another student on the school grounds or at school sponsored activities will receive the following consequences.

- Student will be placed on an Emergency Expulsion and followed by a decision as to whether or not a 10 day suspension (to include the time of the Emergency Expulsion) will be given, except in cases involving extenuating and/or exceptional circumstances.
- While the student is on suspension/expulsion a meeting with the student and parent will be scheduled and options for avoiding a repeat offense will be discussed. Such options may include, but are not limited to:
 1. Return to school on a behavioral contract that outlines specific behavioral and academic expectations.
 2. Return to school on a reduced day program and on a behavioral contract similar to #1.
 3. Transfer to another high school/program also with behavioral contract similar to #1. A third party (to be designated by the Assistant Superintendent) will facilitate the transfer.

- Exceptional/Extenuating Circumstances – A Long Term Suspension or Expulsion may be issued after the Emergency Expulsion when the following elements are involved, including but not limited to gang activity, assault and severe bodily injury. For assaults involving weapons the process outlined in Regulation 3241R, which provides for a long term suspension or expulsion, will be followed. **Weapons:** numchucks, sticks, chains, studded jewelry, furniture, bats, pipes, or any utensil or instrument that can be used as a weapon.
- A **second fight** will result in a long-term suspension or an expulsion except in exceptional circumstances.
- Students returning to school after an emergency, long-term or short-term suspensions will be allowed to make up any and all assignments, quizzes, or tests missed during the time of the expulsions or suspensions without any academic penalty.
- **Students failing to disperse and/or interfering will be subject to the same discipline as the combatant receives.**

THE SALE, DISTRIBUTION, POSSESSION OR USE OF DRUGS, CHEMICALS, OR ALCOHOL, OR BEING UNDER THE INFLUENCE OF A CONTROLLED SUBSTANCE in school, on school property, or at school functions is defined as illegal under the laws of the State of Washington and the City of Tacoma.

USE, POSSESSION AND UNDER THE INFLUENCE – Students who use, possess, or are under the influence of alcohol, unlawful drugs, controlled substances, or hallucinogens during school time, on school premises, or during school-sponsored activities will be immediately suspended and/or subject to expulsion. Such students are also subject to additional educational programs.

First Offense

- The principal shall place the student on emergency expulsion and notify the parent/guardian and request an immediate conference.
- May report incident to the Tacoma Police Department.
- The student shall receive a suspension – which may be short or long term.
- The principal will require that for a student to be readmitted into district educational programs, an evaluation be performed by a certified drug and alcohol counselor. A pre-assessment will be performed within the suspension period. As a result of the pre-assessment, further evaluation by a certified drug and alcohol counselor may be recommended. Information regarding assessment and evaluation options shall be provided.
- The student and parents/guardians must agree to fulfill the recommendation of the evaluator as soon as possible and submit verification to the appropriate administrator. If recommended by the pre-assessment evaluation, the student upon re-admittance into school may be required to become involved with the Student Assistance Program.
- Failure to comply with the assessment recommendation(s) and complete the recommended treatment will result in a 45 day long-term suspension.

Second Offense and Subsequent Offenses

The District will follow the same procedures as set forth for the first offense, except that for a second offense A LONG-TERM SUSPENSION will be imposed. Subsequent offenses may result in EXPULSION. If a student is qualified to receive special education services, the procedure required by state and federal law supersede the above.

DISTRIBUTION - Students who possess with intent to deliver, or who distribute and/or sell alcoholic beverages, unlawful drugs, controlled substances, hallucinogens or items that purport to be any of the foregoing to other students or persons are subject to an emergency expulsion and will be referred to law enforcement authorities.

Upon readmission, these students will be required to participate in educational programs, additional counseling and/or other obligations, for the purpose of assisting them in their return to school. The students are also subject to disciplinary transfer to another school or program.

First Offense

- The principal shall notify the parents/guardians and request an immediate conference.
- The principal shall immediately place the student on emergency expulsion for the violation of district rules and shall either suspend the student for the remainder of the semester or expel the student. If the violation comes near the end of the term, and a long-term suspension is imposed, the long-term suspension shall be for a time equal to a semester.
- The principal shall notify the appropriate law enforcement/juvenile agency.
- Before a student is to be readmitted into district educational programs, the principal will require a pre-assessment be performed within the suspension period by a certified drug and alcohol counselor. As a result of the pre-assessment further evaluation by a certified drug and alcohol counselor may be required. The student and parents/guardians must agree to fulfill the recommendation of the evaluator as soon as possible and submit verification to the principal. The principal may consider reducing the suspension/expulsion or holding it in full or partial abeyance if the student complies with the evaluation/treatment recommendations.
- Upon re-admittance into school, the principal shall require the student to be involved with the Student Assistance Program.

Second Offense and/or Subsequent Offense

- The district will follow the same procedure as set forth for a first offense, except that for a second offense the student will be expelled.
- If a student is qualified to receive special education services, the procedures required by state and federal law supersede the above.

POSSESSION OF WEAPONS - Student possession of a weapon on district or at district-sponsored events creates a danger to students and staff and is disruptive to the operation of schools.

Students who possess a weapon or who carry, exhibit, display, or draw any weapon or any item apparently capable of producing bodily harm in a manner which, under the circumstances, manifest an intent to intimidate another or warrants alarm for the safety of others shall be subject to discipline up to and including expulsion.

“Possession” includes, but is not limited to, having a weapon on district property or at a district-sponsored event located: (a) in a space assigned to a student such as a locker or desk; (b) on the student’s person or property (such as on the student’s body, in his/her clothing, purse, backpack, gym bag, or vehicle); or (c) under the student’s control or accessible or available, such as hidden by a student.

A weapon includes, but is not limited to:

1. a fire arm, which is a weapon or device from which a projectile may be fired by an explosive;
2. an air gun, which includes any air pistol or air rifle, designed to propel a BB pellet, or other projectile by discharge of compressed air, carbon dioxide or other gas, or any items which appear to be realistic firearms or air guns; or
3. a sling shot, which is a piece of metal, or a stone fastened to a short strap, chain or thong, used as a weapon; or a sling shot, which is a forked piece of wood having an elastic band fastened to the prongs for shooting small stones and pebbles; or

Weapon includes continued

4. a sand club, chains or metal knuckles; or
5. a device commonly known as “throwing stars”, multi-pointed metal objects designed to embed upon impact from any aspect; or
6. any knife which is a cutting or stabbing instrument with a sharp blade set in a handle; or
7. a dirk, which is a type of dagger; or
8. any device commonly known as “nun-chu-ka” sticks consisting of two or more lengths of wood, metal,, plastic or similar substance connected with wire, rope or other means.

Except in extenuating or exceptional circumstances the following discipline shall apply for all offenses:

- The principal/designee shall place the student on emergency expulsion, in accordance with the WAC, Ch. 392-400.
- The principal/designee shall notify the parents/guardians and request an immediate conference.
- Unless otherwise provided by law, in cases involving the possession of a firearm or an air-gun, the principal/designee shall, without exception, **EXPEL THE STUDENT**.
- The principal/designee shall notify law enforcement.
- In cases involving weapons other than a firearm or an air-gun, the principal/designee may initiate a transfer of the student to an appropriate program.

RULES/VIOLATIONS

ASSAULT - The use or threat of physical force against another person. NO TOLERANCE. Students will be emergency expelled.

BEEPER/PAGER/CELLULAR PHONES, ELECTRONIC DEVICES & HEADPHONES which cause a disruption to the educational process will be confiscated. This includes using cell phones to take pictures or text message(s) during class time. Electronic devices include, but are not limited to, cell phones, pagers, personal listening devices such as portable CD/tape/radio players, MP3 players, iPod’s, electronic games, headphones, etc.

First Offense Confiscated for the remainder of the day or longer by the teacher/security/administration

Second Offense Confiscated and parent contacted to retrieve the item from the teacher/security/administration

Third Offense Confiscated and given to administrator with office referral, Thursday/Friday school given.

*Subsequent violations may result in suspension from school.

CAUGHT OFF CAMPUS BY TRUANT OFFICERS or ADMINISTRATION

First Offense Extended School and parent contact.

Second Offense Two Extended Schools and parent conference required with the principal/counselor.

Third Offense Short-term suspension up to long-term suspension

DISPLAY OF AFFECTION, SEXUAL ACTIVITY, LEWD CONDUCT - Lewd conduct, sexual activity, or inappropriate displays of public affection, such as passionate kissing or inappropriate touching or hugging **is NOT** allowed on campus or at any school activities.

DRESS CODE/INAPPROPRIATE DRESS - The dress code at Wilson High School requires that student dress be appropriate for a learning environment and not a “*disruption to the educational process*”. Therefore, clothing must not offend or cause a safety hazard/concern to other students, staff, parents, or the community.

- Garments that have alcohol, drug, sexual or ethnic/racial comments or connotations are not allowed to be worn at school or school related activities (home or away).
- Garments with profanity, lewd/sexual pictures/words, and /or any other offensive language or intent will not be tolerated.
- Skimpy clothing such as tops with spaghetti straps, bare shoulders, showing bare midriff, excessive cleavage, etc.; lingerie, camisoles, see through clothing, muscle shirts, and excessively short skirts, skorts, shorts and dresses(i.e. daisy dukes, hot pants, mini-skirts etc) are not permitted.
- Pants, shorts, skirts are to be worn at the waist...no “SAGGING”.
- Sleepwear (blankets, house shoes/slippers, robes, pajamas) is not allowed.
- Items such as, scarves, bandanas, “do-rags”, towels, skull caps, etc. are not allowed.
- Sunglasses are not allowed to be worn inside the buildings.
- Shoes are to be worn at all times. No slippers or house shoes. Flip flop shoes are not suitable footwear for the science lab. Students should bring appropriate closed toe shoes for these classes.
- Items (clothing and/or jewelry) with spikes, nails, chains, or any other objects that could be used as a weapon are not allowed at school or school-related activities.
- Dress code applies to extracurricular activities as well.

<u>First Offense</u>	1 day after school detention
<u>Second Offense</u>	Friday School
<u>Third & Subsequent Offense</u>	Short-term suspension up to long-term suspension

Students who violate provisions of the dress code relating to extracurricular activities may be removed or excluded from the extracurricular activity for such period as the principal/designee may determine.

FLAG SALUTE - Wilson High School adheres to the Washington State law regarding the United States flag procurement, display and exercises. The Pledge of Allegiance will be recited daily. Students not reciting the pledge shall maintain a respectful silence.

GAMBLING - No gambling of any type is permitted. Use of gambling devices, such as, but not limited to, cards or dice, is prohibited. These items may be confiscated and students who gamble will be subject to progressive discipline up to and including suspension.

GANG RELATED ACTIVITY - Preserving a beneficial learning environment and assuring the safety and well-being of all students and staff are primary concerns of the Board of Directors. Groups and/or individuals that initiate, advocate, or promote activities which threaten the safety or well-being of persons or property on school grounds or at school-related activities, or which disrupt the educational environment and is harmful to the educational process. Such groups or group affiliations are referred to as “implied gang membership”.

GANG RELATED ACTIVITIES CONTINUED

Gang-related activity can cause a material and substantial disruption of the educational process and is inconsistent with the educational mission of the District and Wilson High School. It creates an atmosphere where unlawful acts or violations of school regulations are more likely to occur. Because gang initiations, intimidation, and related activities may place students and staff and patrons in danger of bodily or mental harm, and/or may lead to property damage, they are prohibited.

Also prohibited are the use of hand signals, graffiti or the presence of any apparel, jewelry, accessory, or manner of grooming which, by virtue of its color, arrangement, altered symbol, or any other attribute, may indicate membership or affiliation with a gang. Hand signals or other behavior(s) which may be accompanied by these indicators which present a clear and present danger to students, staff, and patrons are prohibited and appropriate disciplinary action will be taken.

When groups attempt to segregate students, act as a divisive influence on school and student activities, attempt to control the actions of its members in opposition to school regulations, employ hazing, or attempt to dictate membership on student committees constitutes a “secret group”. Secret groups are also known to have the members dress in certain types of clothing, wear certain colors, and wear different colors of make-up, particularly ‘black’ eyeliner and lipstick, including some drawings/symbols on the face or neck or other visible body parts. Secret student fraternities, sororities, clubs, or other non-school sponsored groups are prohibited.

HATS/HEADGEAR MAY NOT BE WORN IN THE BUILDING. This includes the following areas: auditorium, gym, 400, 600, 900, 800, main building, cafeteria, music building, offices and all classrooms. Hats and all other types of headgear are not to be worn in the buildings during school hours such headgear includes, but is not limited to, hats, scarves that cover entire head, “do-rags”, skull caps, bandanas, etc.

The consequences for repeated violations of this rule will be progressive discipline, which may lead to suspension from school. Students can expect, at the minimum, the following consequences for violating this rule:

- First Offense Confiscated for the remainder of the day & 1 day detention
 - Second Offense Confiscated and parent contacted to retrieve the item, 2 days detention
 - Third Offense Confiscated for the remainder of semester and assigned Friday School.
- *Subsequent and multiple violations may result in suspension from school.**

INAPPROPRIATE CLASSROOM BEHAVIOR

- First Offense Teacher contacts parent; may result in single day suspension from the class.
- Second Offense Teacher contacts counselor and/or administration with referral; may include a short-term suspension
- Third Offense Office referral; administrative discretion; may result in a long-term suspension.

IMPROPER USE OF DISTRICT EQUIPMENT; DIGITAL RESOURCES, DATA BASES & INTERNET RESOURCES

Students are expected to abide by all District policy, state and federal laws when using district equipment. In using the district digital resources, students accept the responsibility to:

- Utilize the digital resources for educational purposes only;
- Adhere to school guidelines on used of the network,
- Use digital resources in a legal, moral and ethical manner;
- Do not use digital resources for illegal, harassing, antisocial, or indecent purposes;
- Do not access or process obscene, pornographic or other inappropriate materials

The consequences for violation of this rule and District Policy/Regulations (Policy 6973 & 6973R):

- First Offense Friday School
- Second Offense 3 day suspension; parent contact
- Third Offense Removal from class with failing grade; 10 day suspension; parent contact; loss of digital use privileges for the remainder of the school year, includes the library and the Career Center digital resources.

LACK OF COMPLIANCE TO STAFF AND/OR DEFIANCE/DISRESPECT

- First Offense Classroom teacher will handle according to classroom rules. Parent contacted.
- Second Offense Office referral; administrative discretion, may include suspension. Parent contacted.
- Third Offense Possible long-term suspension.

REFUSING TO PRODUCE IDENTIFICATION WHEN REQUESTED - School Security and/or Tacoma Police will be called; referral to administration; may include suspension.

SMOKING/POSSESSION OR USE OF TOBACCO - No possession or use of tobacco products, lighters, smoking materials, etc. is allowed. Violators will have tobacco/smoking materials confiscated, parent contact will be made. Additionally, the following consequences will be imposed:

- First Offense One day suspension.
- Second Offense Short-term suspension - Three (3) days
- Third Offense Short-term suspension - Five (5) days up to Ten (10) days.
- Fourth Offense Long-term suspension

Possession/use applies to the surrounding areas, i.e. "line of sight" of the school – neighboring houses, lots, bus stops, play fields.

THEFT/PROPERTY DAMAGE/VANDALISM - State law provides that students and/or their parents/guardians will be held liable for damage to school property. All students are to respect and care for all property of the school. Students will be held liable for damaging school property and will be required to make restitution. Willful destruction or defacement of school property is cause for suspension or expulsion. Student grades, diplomas, and transcripts will be held until costs from damages have been paid. RCW 28A.27.120

OTHER INFRACTIONS

Students who are found to be in violation of any of the infractions will be subject to appropriate discipline as determined by the principal/designee including parent contact and up to a long-term suspension; a school transfer may also be initiated by the principal/designee. Other infractions may include, but are not limited to the following:

- Bus disturbances
- Closed campus violation
- Cooperation
- Ethnic/racial slurs/gender slurs
- Hazing – to subject (newcomers/freshmen, etc.) others to abusive or humiliating tricks and ridicule; intimidation; causing a person to do something they would not normally do.
- In class and/or campus disruption.
- Inappropriate, overt display of affection.
- Loitering: failure to leave the school campus at the official close of the school day; loitering in lavatories/parking lots/off limit areas.
- Lunchroom problems
- Misuse of hall passes
- Personal protection spray device – Possessing a personal protection spray device if under 14 years of age; possessing a personal protection spray device without written parental permission if 14 to 18 years of age; transmitting a personal protection spray device if under 18 years of age; using a personal protection spray device for other than in self-defense as defined by state law; or possessing, transmitting or using a personal protection spray device under any other circumstances.
- Possession of obscene materials.
- Spectator disruptions

All registered Tacoma School District families receive a summer mailing containing a district calendar which includes Student Rights, Responsibilities and Regulations. Please join your child in reviewing its contents and the contents of this handbook. In particular, review policies on Harassment, Intimidation and Bullying, Sexual Harassment, Notification of Threats of Violence or Harm and Discrimination.

GRADUATION REQUIREMENTS

- **23 Credits**
- **Culminating Project**
- **High School & Beyond Plan**
- **Certificate of Academic Achievement (CAA)** – Passing All Three Sections of the WASL or **Diploma Only (No CAA)** – Passing Reading and Writing and Completing 2.0 Credits of Math after the 10th Grade and/or continue to take Math WASL until passed.

CREDITS (Each class is worth .5 credit)

8 Classes	English
5 Classes	Social Studies
2 Classes	Physical Education
2 Classes	Health
4 Classes	Mathematics
4 Classes	Science
2 Classes	Occupational Education
2 Classes	Fine Arts
29 Classes	Total classes in required subject areas
17 Classes	Total classes in required (elective) subject areas
46 Classes	TOTAL CLASSES REQUIRED FOR GRADUATION

Minimum number of classes/credits passed to qualify for:

	<u>Classes</u>	<u>Credits</u>
10 th Grade	10	5
11 th Grade	22	11
12 th Grade	34	17

THE FULFILLMENT OF THE GRADUATION REQUIREMENTS IS THE RESPONSIBILITY OF THE STUDENT AND PARENT/GUARDIAN. Choices of classes to meet the Physical Education, Occupational Education and Fine Arts requirements are available each semester.

FOUR YEAR COLLEGE MINIMUM ENTRANCE REQUIREMENTS:

In addition to High School graduation requirements:

Algebra 1 & 2
 Geometry 1 & 2
 Algebra 3 & 4
 Foreign Language – 2 years of the same language
 Lab Science – 2 years of lab science
 Social Studies – 3 years

NOTE: STUDENTS WHO DO NOT COMPLETE ALL REQUIREMENTS TO GRADUATE, WILL NOT PARTICIPATE IN THE GRADUATION CEREMONY

